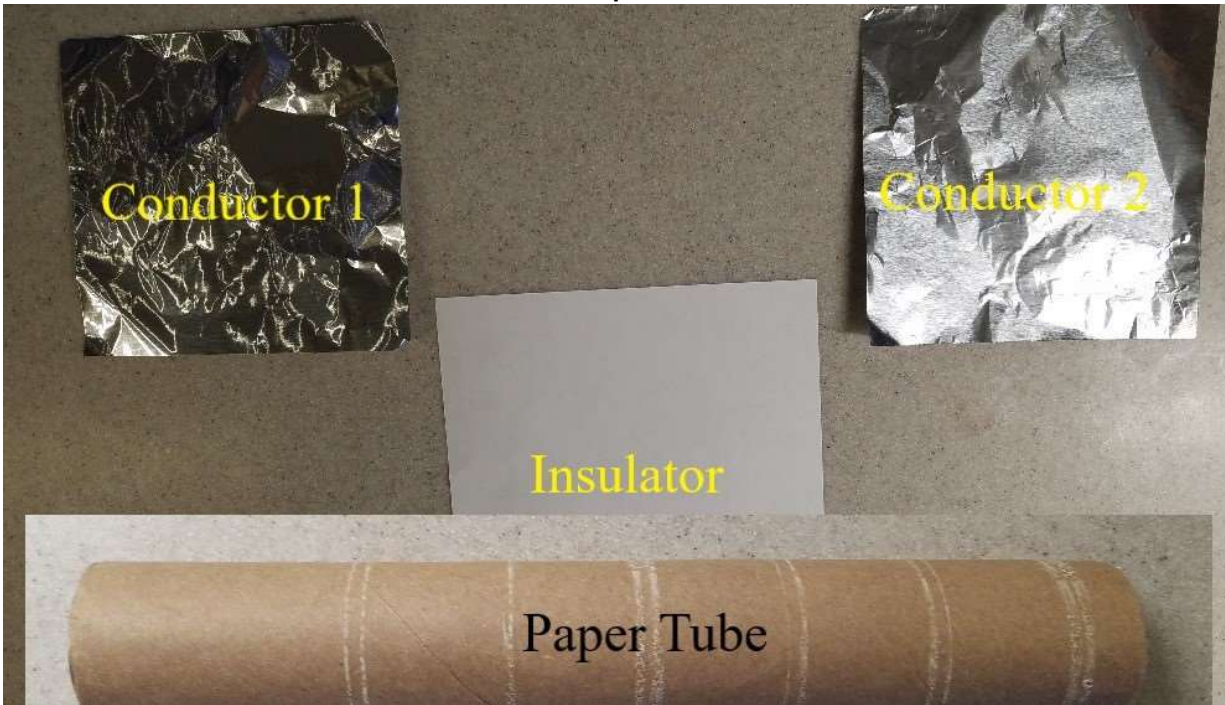
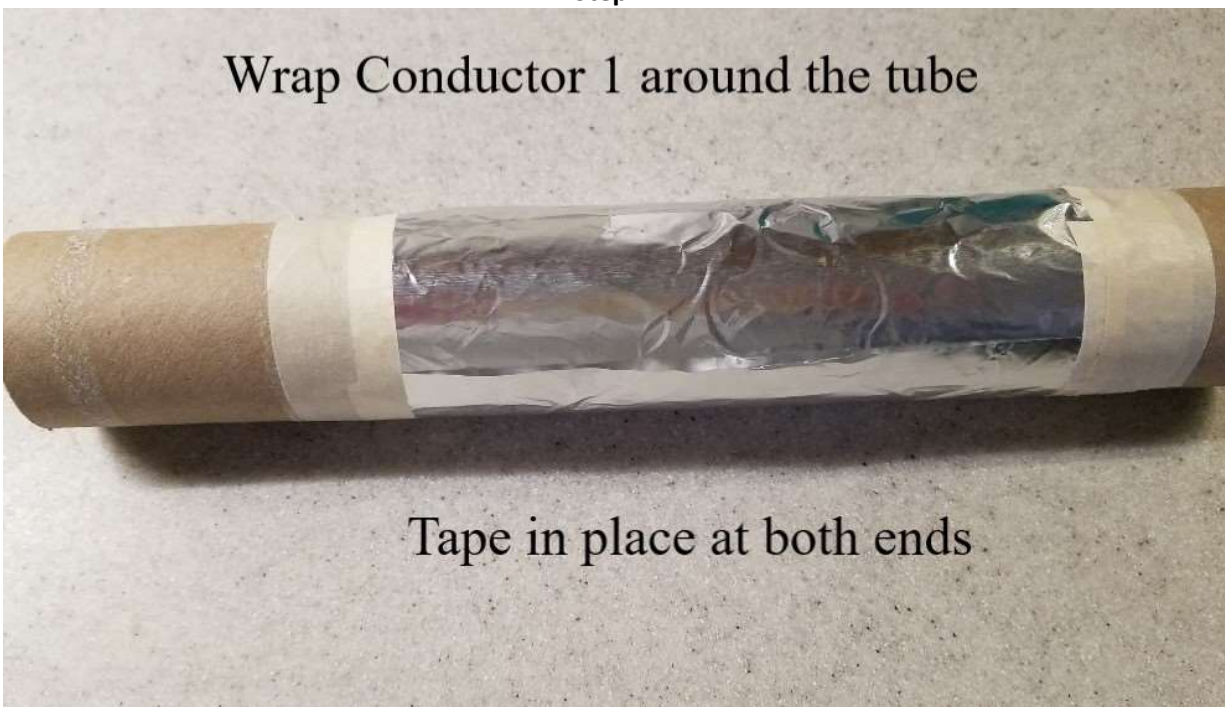


Building a Crystal Radio

Step 1



Step 2



Building a Crystal Radio

Step 3

Tape Conductor 2



To the paper insulator

Step 4

Wrap the paper insulator around the tube



And tape in place

Building a Crystal Radio

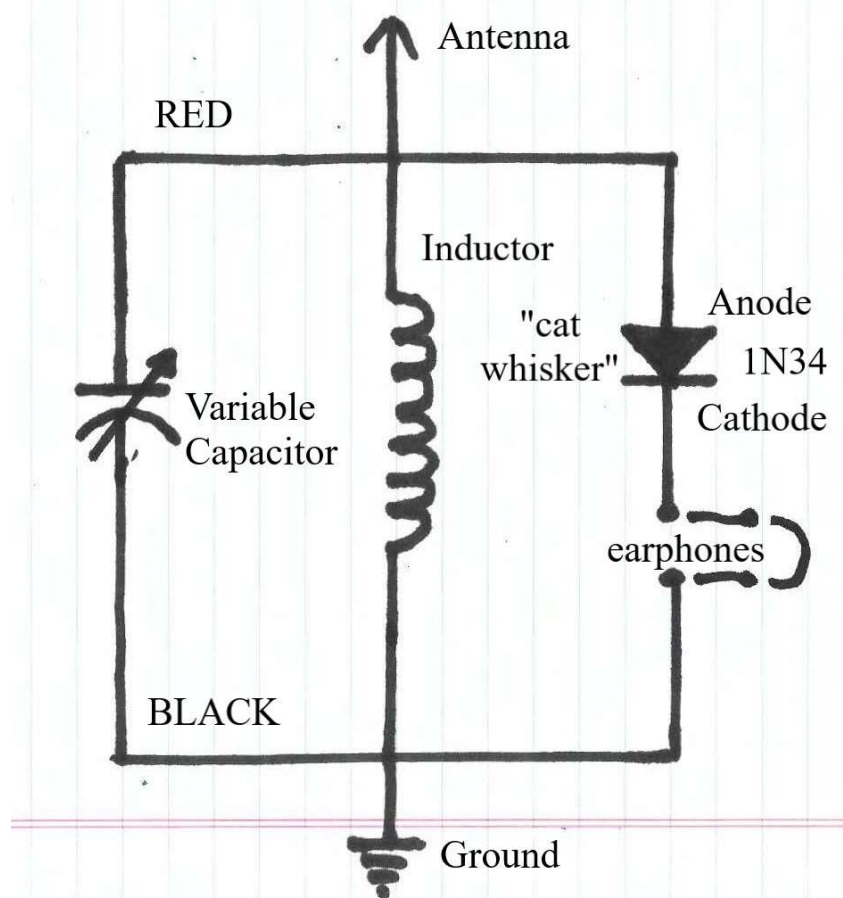
Step 5

Tape a BLACK wire to Conductor 1



Tape a RED wire to Conductor 2

Putting it Together



Connecting the Parts

Step 6 Connect the Capacitor

Step 7 Connect the Antenna

Step 8 Connect the Ground